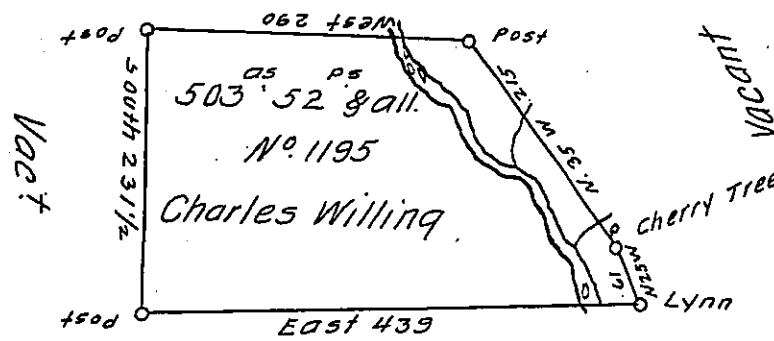


Pg. 158

0611 6N



No. 1193.

Pg. 156.

Situate on the Portage Branch of Singamahoning Creek about seven Miles above the Driftwood and two Miles below the big Elk Lick in North County containing 503^{as} 52 perches and the Usual allowance for Roads.

Surveyed June 5th 1793 for Charles Willing in pursuance of a Warrant Dated the 21st Day of April 1792.

Daniel Brodhead Esq. S.G.

John Canan D.S.

IN TESTIMONY that the above is a copy of the original remaining on file in the Department of Internal Affairs of Pennsylvania, made conformably to an Act of Assembly approved the 16th day of February 1833, I have hereunto set my hand and caused the Seal of said Department to be affixed at Harrisburg, this first day of April 1907.

Geo. D. Brown
Secretary of Internal Affairs.